



# **Stanford Research Park Class "A" Office Space For Lease**

**1001 Page Mill Road, Building 2, Palo Alto**



Cornish & Carey Commercial Newmark Knight Frank

## **±26,661 Square Feet Available**

We are pleased to offer the following space:

- ◆ **Two-Story Freestanding Building**
- ◆ **Available 1/1/2012**
- ◆ **Surface Parking: 3.3/1000**
- ◆ **Monument Signage Available on Page Mill Road**
- ◆ **Exceptional Exterior Windowline**
- ◆ **Beautiful Campus Setting - Landscaped Gardens with Water Features**
- ◆ **Direct Lease with Mozart Development Company**
- ◆ **See Attached Floorplans**
- ◆ **Call Agent to Tour**

**Howie Dallmar** Executive Vice President 650.688.8530 [howard@ccareynkf.com](mailto:howard@ccareynkf.com) Lic #00864566

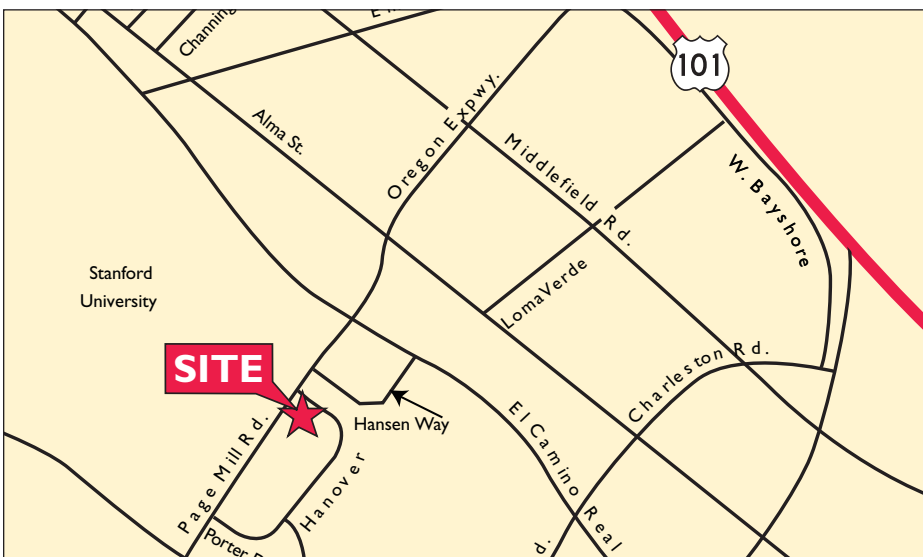
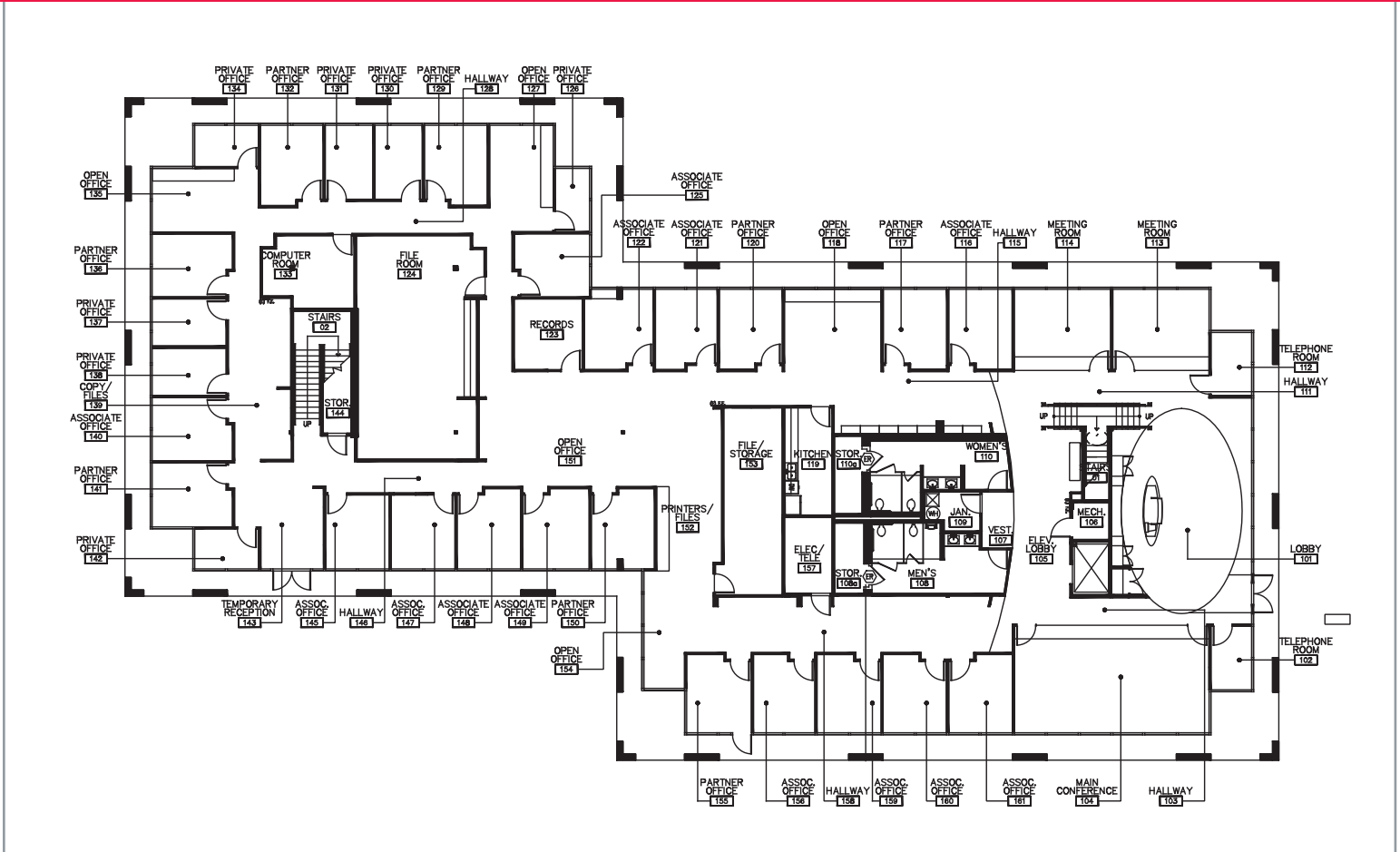
245 Lytton Avenue, Suite 150, Palo Alto, CA 94301 T 650.322.2600

[www.ccareynkf.com](http://www.ccareynkf.com)

Procuring broker shall only be entitled to a commission, calculated in accordance with the rates approved by our principal only if such procuring broker executes a brokerage agreement acceptable to us and our principal and the conditions as set forth in the brokerage agreement are fully and unconditionally satisfied. Although all information furnished regarding property for sale, rental, or financing is from sources deemed reliable, such information has not been verified and no express representation is made nor is any to be implied as to the accuracy thereof and it is submitted subject to errors, omissions, change of price, rental or other conditions, prior sale, lease or financing, or withdrawal without notice and to any special conditions imposed by our principal.

10-2055\*09/11

1001 Page Mill Road, Palo Alto - Building 2 - First Floor



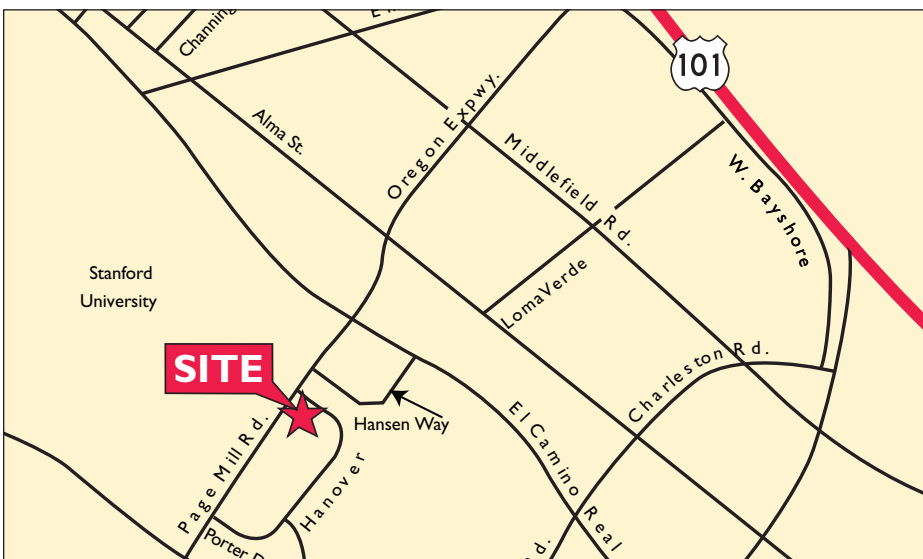
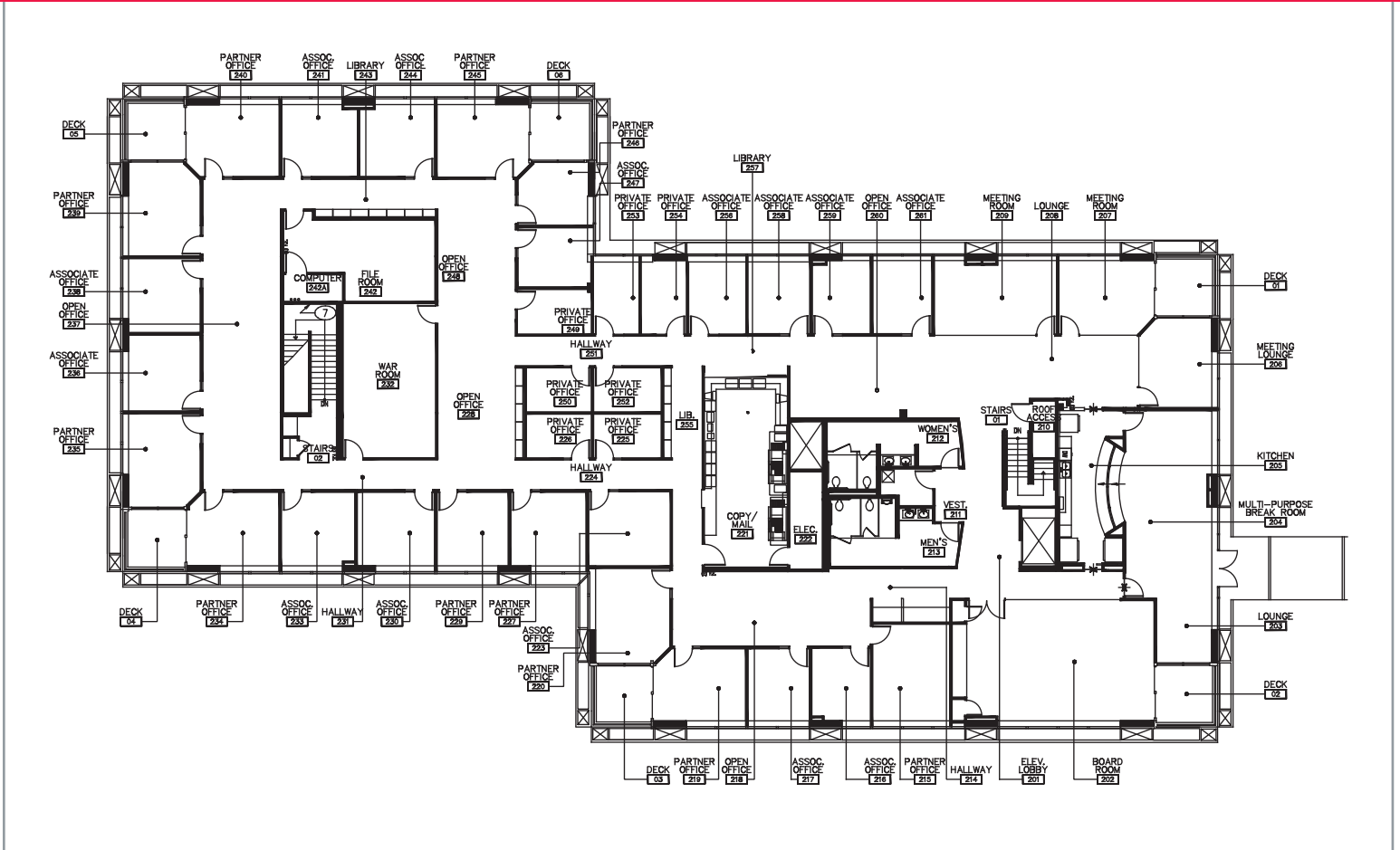
Howie Dallmar Executive Vice President 650.688.8530 [howard@ccareynkf.com](mailto:howard@ccareynkf.com) Lic #00864566

245 Lytton Avenue, Suite 150, Palo Alto, CA 94301 T 650.322.2600

[www.ccareynkf.com](http://www.ccareynkf.com)

10-2055\*09/11

1001 Page Mill Road, Palo Alto - Building 2 - Second Floor



**Howie Dallmar** Executive Vice President 650.688.8530 [howard@ccareynkf.com](mailto:howard@ccareynkf.com) Lic #00864566

245 Lytton Avenue, Suite 150, Palo Alto, CA 94301 T 650.322.2600

[www.ccareynkf.com](http://www.ccareynkf.com)

10-2055-09/11